

THE

WELCOME TO

# WOLF PACK

KUNSAN NEWCOMER'S GUIDE



CREATED BY:  
THE AIRMAN & FAMILY READINESS  
CENTER

JULY 2022

MISSION...TEAM...READINESS

01



# Table of CONTENTS

## Welcome

8 FW/CC KRO Policy Letter

## COVID-19

Everything you need to know about  
COVID related travel & Quarantine

## Newcomers

Wolf Pack History

## Life at the Pack

A brief overview of  
resources available to you

## Contact Us!

Unit Contact Guide



56



## FEATURED

01 Welcome to Korea

08 Wolf Pack Covid-19 Guidance

15 Wolf Pack History

23 Dorm Information

32 Wolf Pack Activities and Resources



**DEPARTMENT OF THE AIR FORCE  
8TH FIGHTER WING (PACAF)  
KUNSAN AIR BASE, REPUBLIC OF KOREA**

5 July 22

MEMORANDUM FOR ALL 8 FW PERSONNEL

FROM: 8 FW/CC

SUBJECT: Korea Readiness Orientation (KRO) Policy Letter

**1. Background.** In order to fulfill the Wolf Pack mission of “Defend the Base, Accept Follow-on Forces and Take the Fight North”, all new arrivals must complete in-processing and initial training requirements in order to be mission ready. The 8 FW KRO fulfills all common requirements to join the Wolf Pack.

**2. Purpose.** This policy requires all 8 FW personnel to attend mandatory KRO in order to bolster operational and mission readiness in this armistice operating environment, to safeguard the vital relationship the United States enjoys with the Republic of Korea, and to more efficiently meet our obligations under the Mutual Defense Treaty and implementing agreements. The purpose of this mandatory 5-Day orientation consolidates activities into a singular event and provides a venue to complete all necessary PCS-related actions while minimizing time away from the new unit of assignment and simultaneously enabling newly assigned members to integrate more quickly.

**3. Applicability.** This policy applies to all 8 FW military personnel and assigned/authorized civilian personnel as a result of a permanent change of station orders and/or temporary duty/temporary additional duty status.

**4. KRO Order.** The following KRO activities must be completed by all Airmen within 14 days of arrival (or within 14 days of release from COVID-related quarantine or isolation). Units are responsible for ensuring new arrivals are scheduled for and attend KRO within the 14 day window. KRO activities are not intended to replace unit in-processing requirements. After all other KRO requirements are complete, supervisors will meet with their Airmen individually to review key points of the KRO and the readiness demands of duty in Korea. This meeting is a KRO requirement.

a. Mission Brief & Intelligence Update: All new members of the Wolf Pack will receive the 8 FW mission brief as well as a current intelligence update.

b. In-Processing: KRO includes mandatory in-processing for medical/TRICARE and finance. All new arrivals should be prepared to complete their travel voucher as part of finance in-processing. Members will be scheduled for their finance in-processing appointment on either day 1 or day 5. Personnel in-processing will be accomplished at the unit level.

c. Newcomers Orientation: This includes an overview of Kunsan specific activities and services as well as AFI-driven requirements.

d. Mission Readiness Training: All new arrivals will complete Kunsan’s Ability to Survive and Operate (ATSO) training in order to be prepared to operate in a contested environment on the Korean Peninsula. Furthermore, to enhance the Wolf Pack’s ability to Defend the Base, all E-5s and below will accomplish Kunsan Base Defense Training on days 3 and 4 of KRO. This training

*MISSION.TEAM.HERITAGE*

is the baseline requirement for successfully executing the Wolf Pack mission and is a building block for further security training and activities across the installation.

5. Commanders and supervisors are charged with ensuring all military personnel and assigned/authorized civilian personnel are briefed on the contents of this letter. Immediate supervisors, individual sponsors and/or commander's support staff of newly arrived Airmen will coordinate attendance of the program prior to newcomer's arrival. Their leadership support is crucial to the success of the program.

6. The Wolf Pack's ability to accomplish its mission is predicated on a highly trained and motivated force. KRO provides the means of completing baseline in-processing and training in an efficient manner in order to ensure we are always ready to "Defend the Base, Accept Follow-on Forces and Take the Fight North".

JEFFRESS.HENR  
Y.R.1047297741  
HENRY R. JEFFRESS III, Colonel, USAF  
Commander

Digitally signed by  
JEFFRESS.HENRY.R.1047297741  
Date: 2022.07.05 17:29:56  
+09'00'

# PRE-DEPARTURE NEGATIVE COVID-19 TEST RESULT REQUIREMENT FOR INTERNATIONAL ARRIVAL(from May 23, 2022)

◇ For all travelers entering the Republic of Korea, a supervised negative COVID-19 Rapid Antigen Test (RAT) result will be additionally accepted from May 23, 2022.

## 1. Requirements

Category	Requirement
① Test type (Method)	<ul style="list-style-type: none"> <li>▶ It needs to be based on nucleic acid amplification tests (NAATs).</li> <li>* Either a supervised Rapid Antigen Test (RAT) taken at a hospital or clinic, or DNA amplification-based PCR test (RT-PCR, LAMP, TMA, SDA or NEAR, etc) is valid.</li> <li>* All forms of self-administered tests are NOT valid regardless of test type.</li> </ul>
② Time of testing and issuance of PCR(RAT)negative certification	<ul style="list-style-type: none"> <li>▶ The test must be performed and the PCR negative certificate must be issued within 48 hours (two days) before the departure date.</li> <li>- A supervised negative COVID-19 RAT result must be issued within 24 hours prior to the departure date.</li> <li>* (Example) If you are departing from a country to Korea on May 23, 2022 at 10:00, you must submit your negative PCR test result taken after 00:00 on May 21, 2022 or supervised negative RAT result taken after 00:00 on May 22, 2022.</li> </ul>
③ Required items	<ul style="list-style-type: none"> <li>▶ Name*, date of birth**, test method, test date, test result, date of issuance, and name of testing center should be included in the test result.</li> <li>* The name on the test result needs to match the name on the passport (middle name can be omitted as long as the other names are identical)</li> <li>** Passport number or national ID number is acceptable in lieu of date of birth</li> </ul>
④ Test result	<ul style="list-style-type: none"> <li>▶ The test result must be <b>NEGATIVE</b>.</li> <li>* If the test result is "INDETERMINATE", "UNCLEAR", or "POSITIVE", the relevant result is invalid.</li> </ul>
⑤ Language	<ul style="list-style-type: none"> <li>▶ The test method must be written in Korean or English.</li> <li>* If the test method is written in a language other than Korean or English, a translated copy of the test result in Korean or English needs to be submitted together with a certificate of translation. (If the test result was translated by individual translators, the translated document needs to be certified by a notary office or Korean embassy.)</li> </ul>

※ Make sure to check the arrival procedure for each country on the websites of diplomatic missions abroad prior to departure (<http://overseas.mofa.go.kr>).



## 2. Those who are exempt from the requirement of submitting a PCR(RAT) negative certificate(Responsible for proving yourself\*)

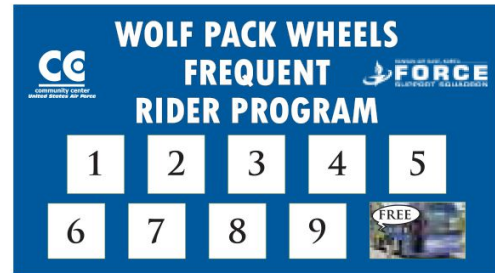
- Children under 6 as of the date of arrival (only if all the accompanying persons traveling with the child have submitted valid negative test results)
- Individuals with quarantine exemption certificates for humanitarian (attending funerals) or official business reasons.
  - ※ The exemption of test requirement for foreign nationals with quarantine exemption certificates for above purposes is effective from 18 November 2021 (The exemption is already applied for Korean nationals).
- Flight crew(who arriving for air operation)
- Individuals who departed from Korea for another country but were denied entry or otherwise did not go through with the entry procedure at another country before returning to Korea. This applies to both Korean nationals and foreign nationals, and the burden of proof is on the traveling individual.
- **Korean sailors departing from Singapore who possess a "Seafarer's Book of the Republic of Korea" (effective until May 22, 2022)**
  - ※ Subject to change according to the COVID-19 situation overseas
- Korean nationals entering Korea within 10 to 40 days of the date when they tested positive for COVID-19\*
  - \* **A DNA amplification-based test such as a PCR test or supervised RAT taken in Korea is accepted, but from May 23, 2022, a supervised RAT taken outside of Korea will be also accepted.**
- Foreign nationals on a long-term stay who had COVID-19 in Korea entering Korea within 10 to 40 days of the date when they tested positive for COVID-19, taking effect from April 11 (only applied to those holding at least one of the following: residence card, overseas Korean resident card, permanent resident card, ID card of diplomatic mission in Korea or USFK Common Access Card)
  - ※ Even if those who are exempt from presenting proof of a negative COVID-19 test, if they develop symptoms of COVID-19, they are not permitted to board their flight.

## 3. Measures taken if a person does not submit a PCR(RAT) negative certificate, or if a submitted certificate does not meet the requirements

- **(Before entry)** If you do not have a PCR(RAT) negative certificate or have a certificate which does not meet the requirements, you will not be allowed to board the aircraft.
  - ※ A person who is exempt from submission of a PCR(RAT) negative certificate is allowed to board the airplane even if he or she does not have a certificate, or if the certificate does not meet the requirements.
- **(After entry)** Korean nationals and foreign nationals on a long-term stay must quarantine at a government-designated facility for 1~2 days at their own cost. Foreigners on a short-term stay are not permitted to enter Korea.



**Purchase 9 one way trips (Kunsan-Osan Shuttle)  
and receive the 10th trip **FREE!**  
Pick it up at the Falcon CAC Tour Desk  
or Osan ITT.**



**KUNSAN ↔ OSAN**

Departure Location		Mon & Wed	Tue & Thur	Friday	Sat & Sun
KUNSAN AB	Falcon CAC	1200	NO BUS	0800 & 1800	0800 & 1200
	WP Lodge	1215	NO BUS	0815 & 1815	0815 & 1215
OSAN AB	Turumi Lodge	-	NO BUS	1315 & 2115	1315 & 1715
	Osan ITT	-	NO BUS	1330 & 2130	1330 & 1730
	Pax Terminal	1800 (Time may vary due to Patriot Express)	-	-	-
<p><b>\$65 each way (official) / \$20 each way (leisure)</b>  <b>Kunsan AB - Osan AB: 2.5-HOUR TRIP</b>  <b>*Face Masks required IN ACCORDANCE WITH USFK GUIDANCE*</b></p>					

**Wolf Pack Wheels outbound rotator passengers' drop off location will be Turumi Lodge & PAX Terminal**

Osan to Incheon Airport			Incheon Airport to Osan		
Departs	Departure Time	Arrives	Departs	Departure Time	Arrives
ITT	0540	Terminal 1 & 2	Terminal 2	0900	Turumi/ITT
Turumi	0600		Terminal 1	0930	
ITT	1140	Terminal 1 & 2	Terminal 2	1830	Turumi/ITT
Turumi	1200		Terminal 1	1900	
ITT	1510	Terminal 1 & 2	Terminal 2	2200	Turumi/ITT
Turumi	1530		Terminal 1	2230	

Incheon Airport: Bus departs from Gate 1 (1st floor) at Terminal 1 and from Gate 3 (1st floor) at Terminal 2.

After departing Osan AB, it takes approximately 1.5 hours to reach Terminal 1 and an additional 20 minutes to reach Terminal 2.

Terminal 1 Airlines: Asiana Air, American Air, United Air, Other Airlines

Terminal 2 Airlines: Korean Air, France, Delta Air, KLM Air

Tickets for sale at ITT or pay driver in USD.

Leisure Travel: \$20

PCS/TDY:\$40 (Reimbursable)

\*Bus departs incheon at 2230 if no delayed arrivals.

# COVID-19 RESOURCES



The most updated Covid-19 information can be found on  
**[www.Kunsan.AF.mil](http://www.Kunsan.AF.mil)**

## Wolf Pack Covid-19 Information

Covid-19 Graphics  
Covid-19 Updates  
Mask Wear Guidance  
Etc.

## Covid-19 Vaccine Distribution

Wolf Pack Vaccine  
Distribution  
  
Vaccine Fact Sheet  
  
FAQs

## Inbound/Outbound ROM & Travel Guidance

Testing Requirements  
Quarantine Guidance  
Leave Policy  
Working Quarantine  
Etc.



**UNCLASSIFIED**

<b>8 FIGHTER WING SENIOR STAFF DIRECTIVE</b>		
<b>SUBJECT:</b> 8 FW HPCON A and Updated Testing Requirements		<b>DATE:</b> 9 June 2022 <b>TIME:</b> 0800L
<b>TITLE:</b> HPCON A and Updated Testing Requirements	<b>SSD NO.</b> 22-9, <b>CHANGE 1</b>	<b>TYPED NAME &amp; SIGNATURE</b> Henry R. Jeffress, Col, USAF
<b>DISTRIBUTION</b>		
8 CPTS	X	
8 WSA	X	
8 OG and All Subordinate Units	X	
8 MDG and All Subordinate Units	X	
8 MSG and All Subordinate Units	X	
8 MXG and All Subordinate Units	X	
Tenant Units (AFOSI, ADC, AFN, Red Cross, 411 CSB, 35 ADA)	X	
<b>REMARKS</b> <p>IAW FRAGO 124, <b>125</b> and the latest ROK COVID guidance, HPCON Alpha has been implemented, effective immediately. This order rescinds SSD 22-7 and SSD 22-5, Change 1:</p> <ol style="list-style-type: none"> <li>1. In order to maintain the resilience of the USFK community and to better align with ROK and DoD COVID-19 guidance, Kunsan AB will transition to HPCON A. All USFK installations remain under a public health emergency declaration. Under HPCON A, all off-installation activities are authorized. See Attachment 1 infographic for more information.</li> <li>2. All personnel traveling <b>TO</b> the Republic of Korea may take either a supervised Rapid Antigen Test (RAT) within 24 hours before <b>date</b> of departure, or PCR within 48 hours before <b>date</b> of departure.               <ol style="list-style-type: none"> <li>a. See Attachment 2 for further details and instructions.</li> </ol> </li> <li>3. All inbound SOFA personnel, <b>regardless of vaccination status, are exempt from quarantine.</b> <ol style="list-style-type: none"> <li>a. All personnel arriving to Kunsan will <b>receive a PCR COVID test on Day 1</b> at the 8 MDG COVID Testing CONNEX. Individuals who are exempt from quarantine are not required to restrict movement while awaiting results of the Day 1 PCR test.</li> <li>b. Further testing is not required unless a member develops symptoms of COVID-19.</li> </ol> </li> <li>4. Members will comply with all ROK mask wear guidelines when off-installation.</li> </ol>		
<b>ATTACHMENTS:</b> <ol style="list-style-type: none"> <li>1. USFK HPCON A Infographic</li> <li>2. Pre-Departure Negative COVID-19 Test Result Requirement for International Arrival</li> <li>3. FRAGO 124 to USFK Operation Order 20-19</li> <li>4. FRAGO <b>125</b> to USFK Operation Order 20-19</li> </ol>		

# HPC NA

## FOLLOW ROK LAWS, RULES AND ADHERE TO USFK CORE TENETS

USFK INSTALLATIONS REMAIN UNDER A PUBLIC HEALTH EMERGENCY DECLARATION.  
HPCON MEASURES APPLY TO ALL PERSONNEL, INCLUDING SERVICE MEMBERS, CIVILIANS, FAMILY MEMBERS,  
CONTRACTORS, AND ALL PEOPLE WITH ACCESS TO USFK INSTALLATIONS.

### EFFECTIVE JUNE 2, 2022

#### TO PROTECT OTHERS



#### TO PROTECT YOUR BUBBLE



#### TO PROTECT YOURSELF



### ALL OFF-INSTALLATION ACTIVITIES ARE AUTHORIZED TO INCLUDE:



COMPONENT COMMANDS AND INSTALLATION COMMANDERS CAN IMPLEMENT ADDITIONAL MITIGATION MEASURES TO IDENTIFY, CONTAIN, PREVENT, AND MITIGATE COVID-19.



FOR MORE INFORMATION CONTACT YOUR CHAIN OF COMMAND OR SUPERVISOR AND VISIT [WWW.USFK.MIL/CORONAVIRUS](http://WWW.USFK.MIL/CORONAVIRUS).  
COVID-19 MITIGATION REMAINS ESSENTIAL TO READINESS



## 8TH FIGHTER WING HISTORY

Kunsan Air Base is home to the 8th Fighter Wing which is known as the “Wolf Pack”, a nickname given during the command of Colonel Robin Olds back in 1966. It’s one of two major Air Force installations operated by the United States in Korea. Kunsan Air Base is located on the west coast of the South Korean peninsula bordered by the Yellow Sea.

Gunsan City is the host city for Kunsan Air Base. “Kunsan” and “Gunsan” are spelled exactly the same in Korean: 군산. Gunsan City is pronounced Gunsan-si and is spelled 군산시. If you search “Kunsan” on the internet, you usually find information about the base, and if you search “Gunsan”, you usually get information about the host city.

### The Beginning

The history of the 8th Fighter Wing officially began in 18 August 1948 at Ashiya Airfield, Japan. The 8th FW did not serve in World War II, it does share ties with a World War II fighter group, the 8th Pursuit (and later Fighter) Group. However, the history of the group stretches all the way back to 1923. On April 1, 1931, 8 PG was activated at Langley Field, Virginia flying such aircraft as the PB-2, P-6 and P-12 until moving in November 1940 to Mitchel Field, New York, where it became responsible for the air defense of New York City. Ten days after the attack on Pearl Harbor, 8 PG received orders to relocate to Brisbane, Australia to fly the P-39 and P-40. The Air Force re-designated 8 PG as the 8th Fighter Group in May 1942.

During early operations, the group and its squadrons (35th, 36th, and 80th Fighter Squadrons) concentrated on defense of Australia and Allied territory in New Guinea. In April 1943, the group moved to Port Moresby, New Guinea flying the P-38 Lightning, the P-40, the P-47 and P-38. After moving to the Philippines in December 1944, the group spent the next several months conducting offensive operations, as well as flying escort missions in the area. Moving to Le Shima in August 1945, 8 FG flew several missions against the Japanese. On August 14, 1945, the day of the Japanese surrender, 8 FG shot down the last enemy plane of the war. During World War II, 8 FG participated in nine campaigns and shot down 446 enemy aircraft, creating 24 aces.

## **Birth of the 8th Fighter Wing**

After the war, the group moved to Fukuoka, Japan in November 1945 as part of the occupation force. In early 1946, the group converted to the P-51 Mustang. On 18 August 1948, the Air Force officially activated the 8th Fighter Wing. 8 FG was assigned as a subordinate component of the wing. In the Mustang—re-designated from the "pursuit" P-51 to the "fighter" F-51—and later in the F-80 Shooting Star, the 8FW provided air defense of Japan. On January 20, 1950, the wing designation changed to the 8th Fighter-Bomber Wing.



## **Korean War**

As the Korean War began, the 8 FBW provided air cover for the evacuation of Americans from Korea on June 26, 1950, the day after the invasion. Major Charles J. Loring, a pilot in the 80 FS, was posthumously awarded the Medal of Honor for flying his badly damaged F-80 aircraft into an enemy artillery emplacement near Sniper Ridge so U.S. infantrymen could escape.

On July 1, 1958, the Air Force re-designated the wing as the 8th Tactical Fighter Wing. On June 18, 1964, 8 TFW moved to George AFB, California, and trained with the F-4D Phantom II until moving to Ubon Royal Thai AFB, Thailand.

## **Vietnam War**

At Ubon, the 8 TFW carried out its wartime mission as it led the way for other tactical Air Force fighter units during the Vietnam War. By the end of 1966, aircrews assigned to 8 TFW flew nearly 14,000 combat missions into Vietnam.

During the war in Southeast Asia, political restrictions gave the North Vietnamese Air Force a distinct advantage over the US. One of the restrictions forbade US air forces from bombing North Vietnamese air bases in and around Hanoi and Haiphong. This restriction essentially gave the North Vietnamese a safe haven for their MiG fighters. To combat this advantage, Seventh Air Force planners in concert with Colonel Robin Olds, 8 TFW/CC, devised a plan known as Operation BOLO to draw the MiGs into a fight against F-4Cs armed for air-to-air combat—wolves in sheep's clothing so to speak.





The Phantoms planned to simulate F-105s by flying at the same altitude, speed, and route and were modified to carry electronic countermeasure pods used only on F-105s until that time. In the final pre-flight brief for Operation BOLO on New Year's Day 1967, Colonel Olds told his pilots, "All right you wolf pack, let's go get them." On January 2, 1967, 11 four-ship flights from the 8th began converging on the North Vietnamese airfield of Phuc Yen. According to plan, the MiGs took the bait. In 12 minutes, 8 TFW recorded seven confirmed and two possible kills without a single loss. Operation BOLO established U.S. air superiority over the North by destroying nearly half of North Vietnam's most advanced fighters in only five days.

Following Operation BOLO, 8 TFW began referring to itself as the Wolf Pack. 8 TFW finished the war as the leading MiG-killer, logging 38.5 confirmed MiG kills prompting Bob Hope to refer to 8 TFW as the "world's largest distributor of MiG parts." In December 1972, 8 TFW was involved in Operation LINEBACKER II, launching 524 sorties for bombing missions against North Vietnam between 18-31 December 1972. All combat operations ended on 15 August 1973.

### **Back to Korea**

8 TFW was transferred to Kunsan Air Base, Republic of Korea on September 6, 1974 and became responsible for air defense of South Korea. Operational F-4D squadrons of the wing were tail coded "WP" (for "Wolf Pack"). In May 1981, the wing transitioned from the F-4 to the newer F-16A Fighting Falcon. This aircraft conversion made 8 TFW the first active-duty overseas F-16 wing. While the overall mission remained unchanged, 8 TFW was reorganized on February 3, 1992 as the 8th Fighter Wing. 8 FW entered a new era on November 17, 2000 when the 35th Fighter Squadron received its first Block 40 F-16s, allowing the Wolf Pack to take the fight into the night.



# ***Moving to the Wolf Pack***

## **Sponsorship**

If you are within 90 days of your PCS departure to Kunsan AB and have not received a sponsor, please contact your gaining unit to request your sponsor's contact information. A listing of CSS contact numbers are located on page 30.

For information regarding base and community policies, refer to the Community Standards, which are available on [www.Kunsan.af.mil](http://www.Kunsan.af.mil). This information will be provided to members upon arrival, or earlier if requested. A few good starting points are as follows:



- **National Anthems:** Airmen will render proper customs and courtesies for BOTH the US and ROK flags and National Anthems. This includes saluting while in uniform, and standing at attention with hand over heart when not in uniform.
- **Morale Jerseys:** frequently authorized for morale and off-duty activities; must be respectful in nature. Get with your sponsor if you would like to order one prior to your arrival.
- **Family member visits:** Limited to <30 days w/in 12-month period when residing in government unaccompanied housing
  - Defined as spouse and children, or parents who are the sponsor's dependents
- **Pets:** Only fish, small turtles and hermit crabs that live in aquariums are authorized on Kunsan AB

## **Mail / Post Office Box**

Newcomers may request a mailbox 90 days prior to their Report No Later Than Date (RNLTLD) by sending a copy of your PCS Orders to your sponsor. The sponsor will then inform you of your address. The combination to your mailbox will be given only to you upon your arrival.

Due to limited mail storage space, we ask that you mail any large parcels you have no sooner than 45 days prior to your RNLTLD.

To avoid delays in mail services, please notify your family, friends, publishers, creditors and businesses of your change of address as early as possible.

If you want to forward your mail before you're assigned a post box, please use the below address:

NAME

PSC 2 Box 5000

APO, AP 96264

# ***USAF Connect App***

Download the app, select “favorites” on the bottom right, and search “8th Fighter Wing” This will help you explore Kunsan AB, and stay up to date on events, newcomers’ information, offers a phone directory, helpful links and much more... This newcomers Guide is also located on USAF Connect for ease during traveling!



# ***Translation Apps***

There are multiple English translation applications, but it is recommended to download one prior to traveling to Kunsan AB. This will help you communicate with Korean Nationals who do not speak English.





# ***Packing Tips***



There is no standard list of what you should bring with you to Kunsan AB, but here are some basic tips to aid in your PCS transition. Please be aware that your unaccompanied baggage could take up to eight weeks to arrive, so it is best to plan ahead.

## **Recommend mailing ahead of time or carrying in your luggage**

- **Bedding** – Sheets, blankets, pillows. The BX does carries a limited selection of these items. Ask your sponsor for specific details and measurements of your assigned bedding.
- **Mattress pad** - You can order one on-line and have it waiting in the Post Office when you arrive, or have it shipped in your household goods.
- **Clothing**
  - **Uniforms:** Pack at least one set of Blues, ABUs/OCPs and PT Gear in your luggage. Also, consider packing appropriate seasonal gear (ex: cold weather gear for winter/rain gear for spring).
  - **Civilian Clothes:** Pack what you think you may need for two to three weeks. If you have a particular brand or style that you prefer, ask your sponsor what is typically available at AAFES. Also, be aware that women's clothing is very limited at AAFES.
  - **Shoes:** The AAFES selection at Kunsan AB is limited. If you have a brand preference, you may consider shipping an extra pair, or packing a few pairs in your luggage.
- **Laptop computer** - You can get internet access set-up in your room for a monthly fee. WiFi is also available at most recreational establishments across the base.

**NOTE:** Keep in mind your ability to maneuver your luggage items from place to place during your travels. Use your sponsor and think about mailing some items ahead of time in order to limit the amount you will need to carry. Also, please speak with your TMO office prior to leaving for baggage limits, as you could incur additional fees for going over the allotted amount.

## **Recommend shipping in unaccompanied baggage**

- **Cooking Items** – You will want the basics to be able to use the kitchen in your quarters. Many rooms already have cooking utensils, but if you have a special tool you prefer, plan to ship it with your household goods. Check with your sponsor and ask them what has been left for you. The ovens are electric, and most are kitchenette size – smaller than stateside ovens, but still big enough for a basic cookie sheet or 9 x 13 inch pan. All quads/rooms are pre-furnished with microwaves.



- **Television, DVD player and Gaming System** – Electronics, to include gaming systems and televisions, are available for sale from AAFES. Cable TV is provided in your room, offering American Forces Network (AFN).
- **TV/Internet NOTE:** If you're a movie watcher or TV series enthusiast, you may want to bring your ROKU, Apple TV or Amazon Fire TV stick. Additionally, a VPN service may be helpful for your TV and internet use, as you may find some websites and streaming services may not be available.
- **Room Décor/Storage** – Bring items to personalize your room if you desire, such as: wall clock, pictures, posters, small area rugs, tapestries, etc. Keep them light because you can't put nails in the walls. Command strips and hooks work well. You may also consider bringing extra storage bin(s) for your closet/cabinet for clothing accessories.
- **Sports equipment** - There are lots of intramural sports here, so bring your own gear if you have it; such as golf clubs, softball gear, soccer gear, bowling ball, etc. You can also checkout tennis, racquetball, wall climbing and weightlifting items free of charge at the Fitness Center. You can rent other gear from Outdoor Recreation, such as skis, snowboards, etc.
- **Alternate Modes of Transportation** – TSgts & below aren't authorized to register POVs, but bikes, skateboards and scooters are good alternatives. Be sure to ship/purchase a helmet, reflective belt, and lights for the front and rear of your bicycle if you plan on using these modes of transportation. Scooters and bicycles will need to be registered with Pass and ID upon arrival.



## WHAT NOT TO BRING!

- Don't bring **ALL** of your belongings. Don't bring furniture. There's no need because the dorms are all fully furnished. You shouldn't need any small appliances or cleaning supplies (ex: microwaves/vacuums) as these are provided for you in the dorms.
- Don't bring your entire closet of clothes, as the closets are relatively small. For individuals that are planning to bring quite a bit, you may want to consider shipping some containers that fit under your bed, or additional Tupperware drawers to put into your closet. Please talk to your sponsor about the amount of space that you will have.



## Privately Owned Vehicle (POV)

- **USFK authorizes E-7s and above the option to ship and register a vehicle while at Kunsan AB**
- Most senior service members buy a vehicle from outgoing personnel during their tour here at Kunsan AB. The following requirements must be completed to operate a vehicle on post and in the country of South Korea.
- For questions about the receiving/registration process, please call Pass and Registration at DSN: 315-782-5678/4744.

# ***Important Wolf Pack Information***



## **Finance Benefits/Entitlements**

- **BAS (Basic Allowance for Subsistence)**
  - All E-1 to E-5 will be on Meal Card Status while assigned to Kunsan AB
  - All E-6 and above will receive BAS while assigned to Kunsan AB
  - **EXCEPTIONS:** Certain Service Members E-1 to E-5 may be placed on BAS status due to their specific work assignments at Kunsan AB. Please speak to your leadership for more detailed information about your situation.
- **COLA (Cost of Living Allowance)**
  - Based on rank and years of service
  - Dorm residents will receive partial COLA
  - If you receive no meal deductions, then you will receive full rate COLA
  - <https://www.defensetravel.dod.mil/site/colaCalc.cfm>
- **DLA (Dislocation Allowance)**
  - If you have dependents that you relocate “at government expense” (i.e. Follow On Location, Designated Location), you are entitled to receive DLA. Otherwise you will NOT receive DLA for this PCS as Government Quarters are assigned to all inbound personnel.
- **FSA(Family Separation Allowance)**
  - If you have dependents, you will receive FSA-R (restricted)
  - If you are mil-to-mil, only one of you may receive FSA-R (you are not entitled FSA if your spouse is stationed at Kunsan AB)
  - If you are paying child support you DO NOT receive FSA
  - Amount is \$250 per month prorated
- **TLA (Temporary Lodging Allowance)**
  - If staying at lodging, request payment from the Housing Office (Bldg. 705) every 10 days
  - TLA will be paid on your paycheck, **YOU** are responsible to pay off your GTC.
  - After terminating billeting take your receipt to the Housing Office
- **HDP (Hardship Duty Pay)**
  - Everyone at Kunsan AB receives HDP
    - \$50 a month and is prorated

## **Finance Customer Service**

- E-Mail 8CPTScustomerservice@US.AF.MIL

# ***Important Wolf Pack Information***

## **The Dorms**

CGOs/SNCOs live in dorms similar to small one-bedroom or studio apartments. These rooms have a small kitchen, living area, bedroom, and private bath. Most E1-E6 members live in “quad” style dorms. These dorms have a shared living area with basic furniture, and a kitchen connected to 4 bedrooms with private baths.

Clarify with your sponsor about what dorm style you will be in. The personal space you will have is comparable to what you would have in a medium-sized bedroom or a college dorm room.

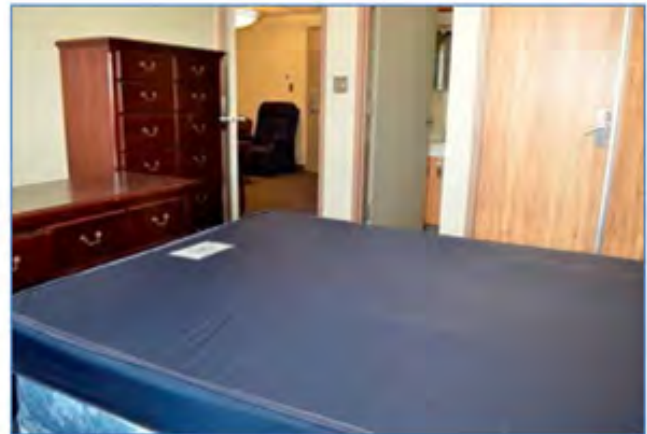
Most dormitories are equipped with a refrigerator, microwave, and stove/oven.

All dorms are set-up with laundry rooms. The size and availability will depend on what dorm you live in. There is also a base coin laundry located in building 1104, available for bulk items.

The next few pages provide photos of what your dorm room may look like. All Rooms have Basic AFN Cable Service (You must provide the TV) provided, and Wi-Fi is available for purchase.

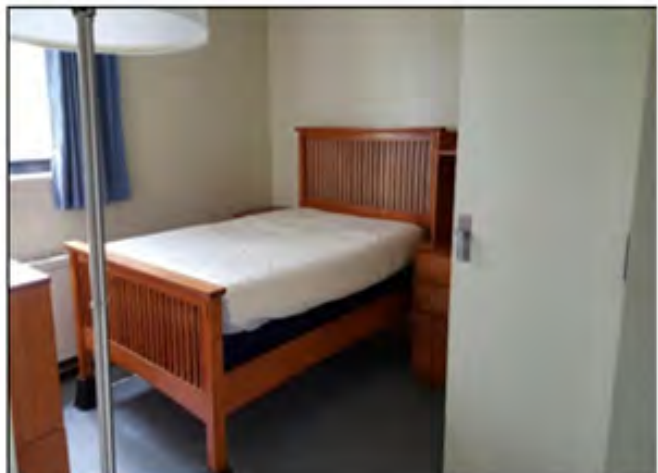
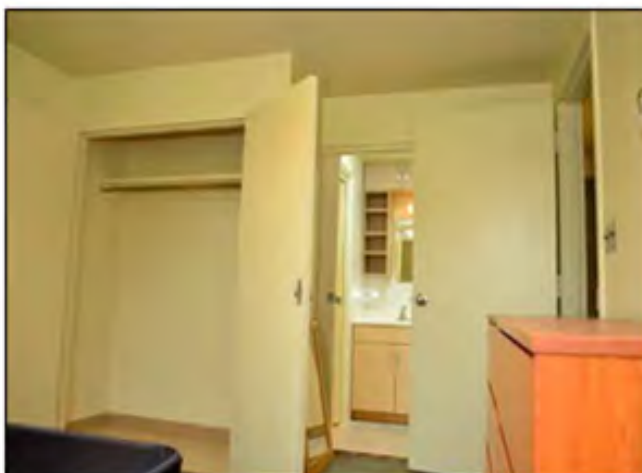
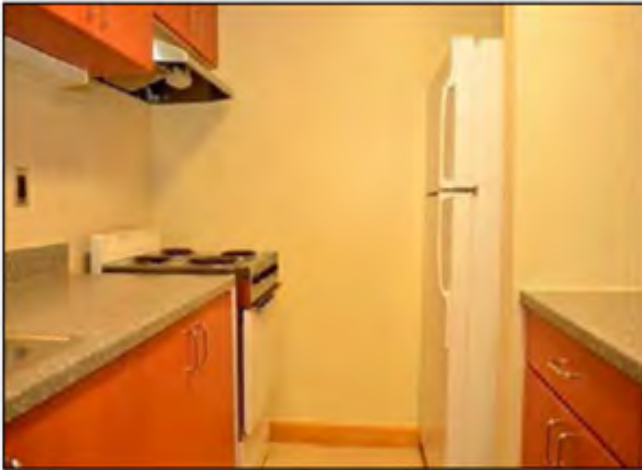


# ***FGO (Lt Col/Maj) Dorms- 1 Bedroom Apt***

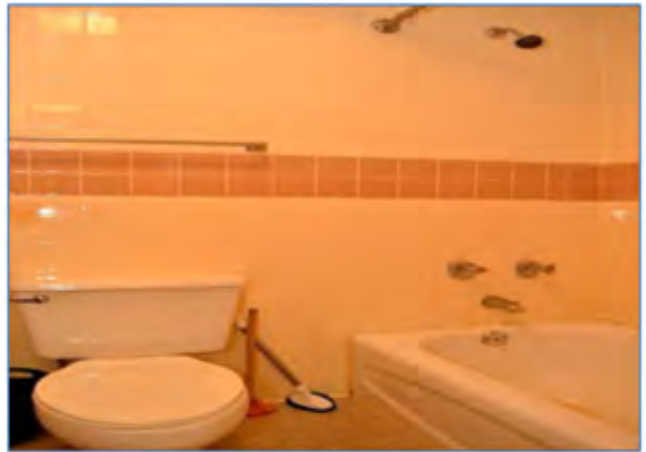




# ***FGO/CGO (Maj/Capt/Lt) Dorms- Efficiency Apt***

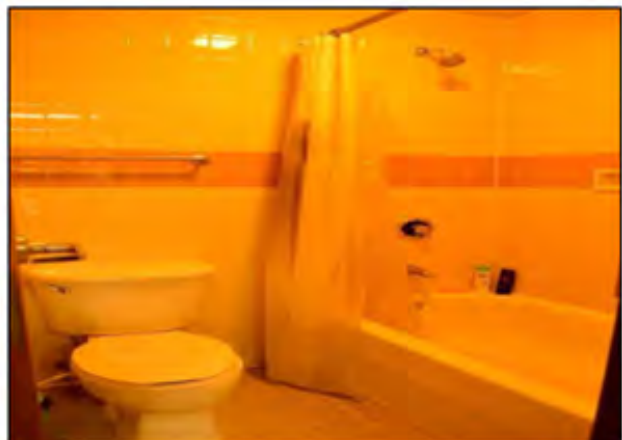


# ***SNCO Dorms- Small 1 Bedroom Apt***



# ***NCO & AMN Dorms***

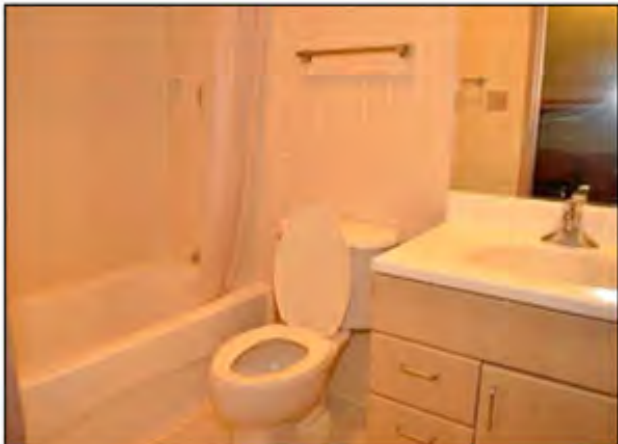
## ***Suitemate Style, 1+1, w/ Shared Kitchen***





# ***NCO & AMN Dorms***

## ***Quad Design w/ Shared Kitchen***

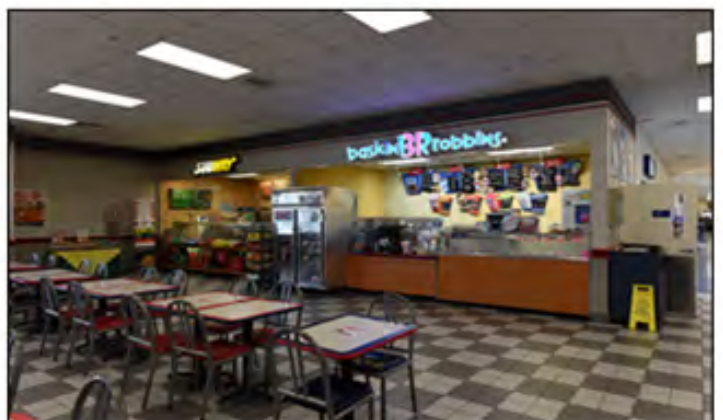
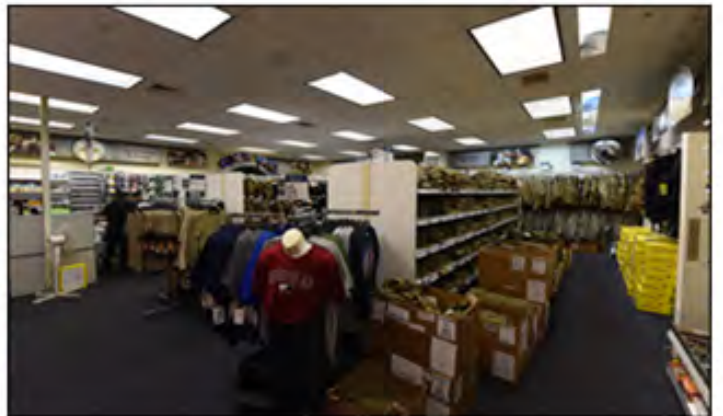
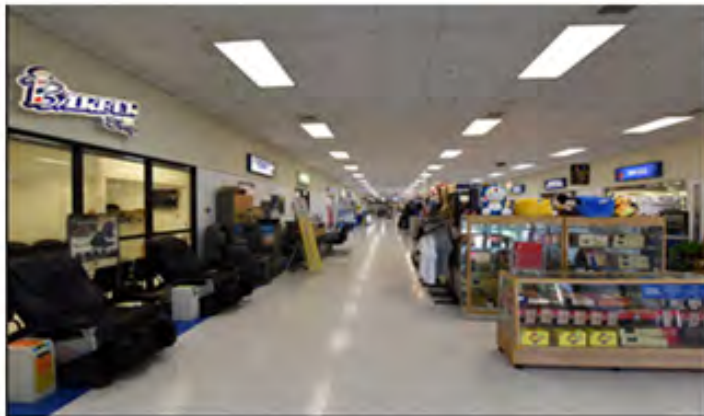




# ***AAFES Shops & Food Court***

## **The Base Exchange:**

- Free Wi-Fi
- Food court has Anthony's Pizza, Popeye's, Taco Bell, Burger King, Baskin-Robbins, Smoothie King, Subway, and Starbucks.
- Other Services: Beauty/Barber Shop, Clothing Sales, Custom Tailor Shop, Custom Shoe Store, Optical Shop, GNC, Florist, Alternations, Asian Gift Store, Art & Engraving shop and Base Theater.
- <https://www.shopmyexchange.com/exchange-stores/Korea/AP/APO/Kunsan-Main-Exchange-1761238>



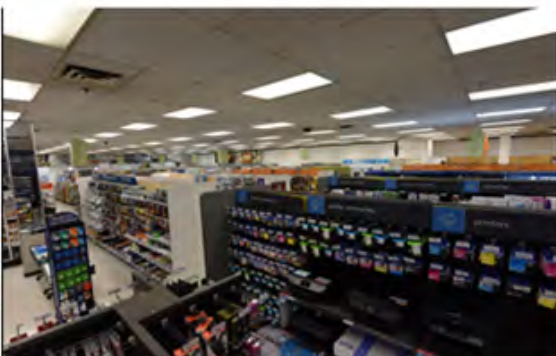
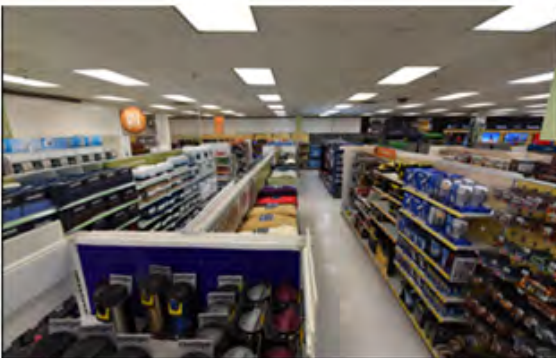
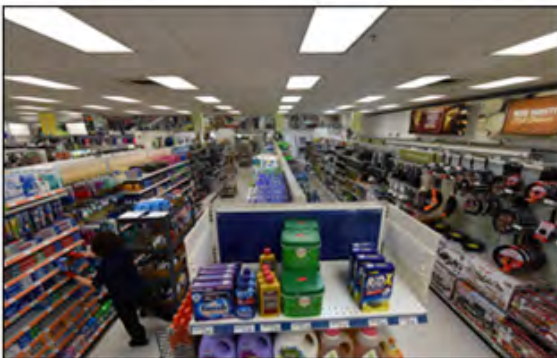
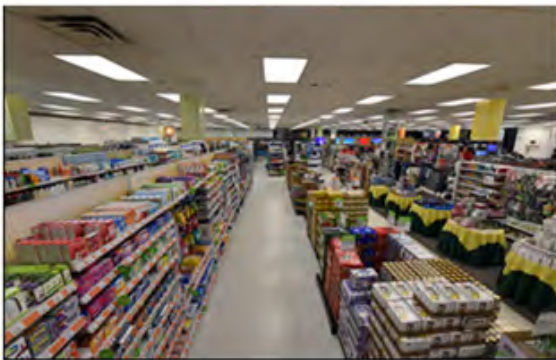
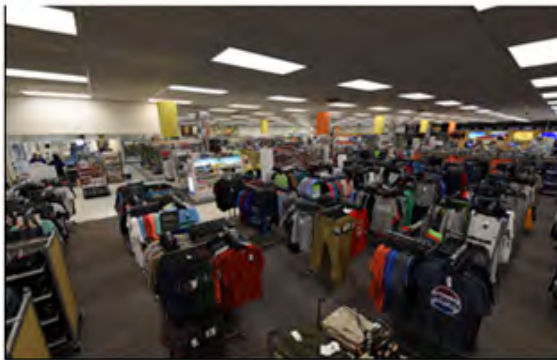
# ***AAFES Exchange***

## **The Base Exchange:**

- Free Wi-Fi
- Kunsan Air Base's main shopping area: It's small but you can order any items they don't have in stock right in the store.
- **Note: Women's clothing is very limited.**

## **The AAFES Annex (Bldg 1104):**

- LG U-Plus: This is where you activate your internet service. They also have a kiosk located in the BX; the is approximately \$70.00 per month. You can also obtain various telephone services to include a room phone or a cell phone.
- Pack N Wrap: They will wrap things for you and package items for mailing all at a low cost.
- Bike Store: You can purchase a limited selection of bikes and accessories. They will also service your bike if it needs repairs.



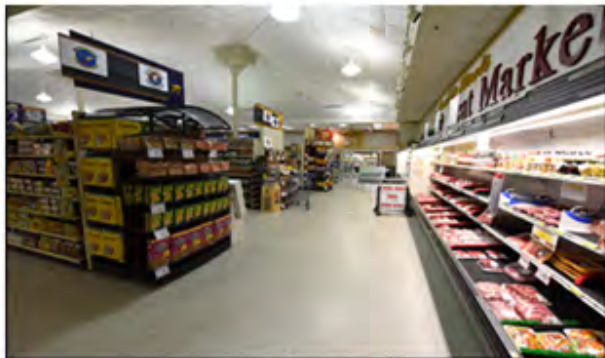
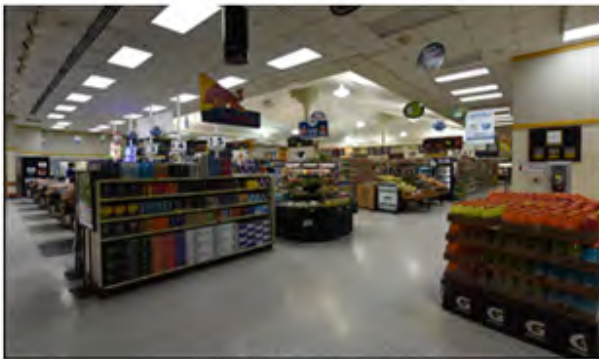


# ***The Commissary***

The commissary is relatively small; however, you can find most of what you're looking for, including most basic foods you get in the CONUS. The produce section is smaller than in a CONUS Commissary and will vary by season. The commissary carries some Korean brand items popular with Americans. You can find some unique drinks and foods that you won't find anywhere else.

The commissary is closed every Monday and during most exercises. If there is an upcoming exercise, most people start stocking up a week in advance.

Note: Some members bring a luggage cart to transport groceries if your dorm is far from the Commissary. Feel free to discuss options or recommendations with your sponsor.



# ***Kunsan AB Activities & Resources***

## **Rosenblum Memorial Library:**

- Free Wi-fi
- 0930-2030, 7 days a week.
- Library Annex (located inside of CAC) accessible 24- hours
- DVDs: Impressive collection of movies, TV series, and Korean movies. New releases are added each month.
- Computer Center: 30 CAC-enabled computers hard-wired with internet connection. Print/scan at no charge. Fax for nominal fee (or free for official use). 2 Skype booths. DVD/VHS/CD viewing equipment available.
- Good Reads: New Bestseller Fiction and Nonfiction books added monthly, including eBooks.
- Relax: Comfortable reading room with magazines.
- Quiet Area: Quiet study area includes two group study rooms.
- Study Guides: Large collection of CLEP and DSST study guides.
- Korea Collection: Learn about Korean culture and history, or browse local travel guides. <https://kunsanfss.com/rosenblum-memorial-library/>



## **The CAC:**

- Free Wi-fi
  - Wolf Pack Café: Serves an array of food and drinks (including breakfast)
  - Free: Offers pool, darts, chess, foosball, ping pong, and gaming area equipped with an Xbox and Play Station.
  - Community Tours: the CAC offers several local tours to travel destinations around Korea. This is a great way to fill your weekend and see the culture.
  - ITT: The CAC is the home of ITT, which offers excellent deals on traveling to other areas of Asia (China/Japan/Hawaii) or back to the states.
- <https://kunsanfss.com/falconcac/>

# ***Kunsan AB Activities & Resources***

## **West Winds Golf Course:**

- Free Wi-fi
- Open 365 days per year, West Winds Golf Course is open from dusk until dawn for your golf needs. The golf course features a nine-hole course, a full-service Pro Shop with a variety of golf clothing and gear, personalized club fitting, a driving range, and a full-service lounge where you can grab a cool beverage and select menu items to include sandwiches, wings, and more.

[https://kunsanfss.com/west\\_winds\\_golf\\_course/](https://kunsanfss.com/west_winds_golf_course/)

## **Base Restaurant:**

- Free Wi-fi
- located in the West Winds Golf Course Club House and offers a variety of food choices. The restaurant is located across from the Wolf Pack Lodge.

## **The Loring Club:**

- Free Wi-fi
- The "L-Club" is an all ranks club with a dining room and two separate lounges; Mickley's Pub and the Olds Room. The club offers a variety of dinner specials throughout the week, to include themed "First Friday" events. Club members eat free at First Friday events, they gain free entry into club events, as well as enjoy discounts and freebies via the monthly coupon book.

<https://kunsanfss.com/loringclub/>

## **Outdoor Recreation:**

- Free Wi-fi
- Outdoor Rec offers an array of trips and events and is a great place to rent sports and outdoor equipment of all kinds. They also have an arts and crafts center, a frame and trophy shop, as well as a paintball area right on base. <https://kunsanfss.com/odr/>



# ***Kunsan AB Activities & Resources***

## **The Fitness Center:**

- Free Wi-fi/ 24-hour access
- Complete with an indoor track, rock climbing wall, racquetball court, free weights, weight machines, treadmills, elliptical, stationary bikes, and more. The fitness center also offers a variety of different fitness classes.

[https://kunsanfss.com/wolf\\_pack\\_fitness\\_center/](https://kunsanfss.com/wolf_pack_fitness_center/)



# ***Kunsan Chapel Services***

## **The Chapel:**

- On base services include Catholic, Gospel, Contemporary, Latter Day Saints, Church of Christ, Jewish, and Earth Based Groups. The Chapel also provides information for Buddhist, Islamic, and Orthodox faiths, as well as hosts other activities and bible studies. For service schedules, visit <https://www.kunsan.af.mil/Units/Chapel/>



## **The Son Light Inn- An awesome hangout area sponsored by the Chapel**

- Free Wi-Fi
- **Fun:** The Inn offers several rooms to hang out in. They have a Movie Room that has AMAZING leather couches with a big screen TV for watching movies as well as a Wii, PS3, and Xbox One gaming systems. A “coffee lounge” with tables and comfortable couches. They have a ping pong/pool table room and 2 rooms for meeting/gathering/eating.
- Coffee: The Inn offers a free coffee bar, usually open Sat & Sun evenings.
- Food: On most Sunday nights, the Inn serves a free home cooked meal beginning at 1800 and is open for everyone.
- Reservations: If you would like to reserve the Son Light Inn for group meetings, cooking events, gaming tournaments, etc. please contact the base chapel at 782-4673.
- **Monthly Community Volunteer Events**
- **Bible Study Groups**

**782-HOPE (4673)**

# ***Kunsan AB Activities & Resources***

You can easily go your whole tour without knowing all the things that are available at Kunsan. Some are "obvious" but others are little gems you may not know exist.

## **The Airman & Family Readiness Center (A&FRC)**

The Airman and Family Readiness Center (A&FRC) is the One Stop Shop which can answer all of your questions about things to do, places to go and ways to get around South Korea. The center offers free soft skills and cultural classes, such as cooking and Korean Language, to assist in your communication efforts with the local populace.

Classes offered:

- Basic Korean Language Class
- Survival Korean Class (Cultural/Language)
- Korean Cooking Class
- Other Ethnic Cooking Classes

The A&FRC provides free tours of downtown Gunsan. The tour consists of how to use the local bus transit system, understand how to read the bus schedule, and how to navigate in downtown Gunsan. This is a perfect way to spend a Saturday, and see what the city has to offer.

Tours Offered:

- Gunsan City Local Bus Tour
- Lotte Mart & Shopping Tour

You can follow Kunsan AB Airman & Family Readiness on Facebook for all of the latest information, scheduled events and more:

<https://kunsanfss.com/afrc/>

Hours of Operation: Mon, Tues, Thur, Fri (0800-1700); Wed (0900-1700)  
(Closed on weekends, federal holidays and down days)

DSN: 782-5644 or Commercial: 011-82-63-470-5644  
[8FSS.AFRC.OfficialCoord@us.af.mil](mailto:8FSS.AFRC.OfficialCoord@us.af.mil)

# Unit Contact Information

<b>Websites and Email:</b> Visit <a href="http://www.Kunsan.af.mil">www.Kunsan.af.mil</a>		
<b>Dialing Instructions:</b> US mobile phone to Base: 011 + 82 + (omit the '0') + xxxx-xxxx Korean mobile phone to Base:063-470-xxxx		
Unit First Sergeants	Duty	Mobile
<b>8 FW Operations Group</b>		
8 OG / 8 OSS / 35 FS / 80 FS - Viper	782-4116	010-4504-9730
<b>8 FW Mission Support Group</b>		
8 FSS/CPTS/FWSA - Herc	782-4315	010-8900-9842
8 CES - Devil	782-4095	010-6793-8525
8 CS - Tron	782-1748	010-8522-3094
8 LRS - Wraith	782-5327	010-6394-9696
8 SFS - Defender	782-7963	010-2065-3729
<b>8 FW Maintenance Group</b>		
8 MXG Staff - Phoenix	782-4909	010-5473-6936
8 AMXS (80 AMU) - Juvat	782-6031	010-8797-7398
8 AMXS (35 AMU) - Panton	782-5831	010-8797-6760
8 MXS - Dragon	782-5726	010-8552-9475
8 MXS - Dragon Shirt Too	782-6954	010-8685-2859
<b>8 FW Medical Group</b>		
8 MDG - Hawk	782-5463	010-8500-0463
<b>Tenant Units</b>		
AFOSI Det 613 - Shadow	782-4594	010-8685-7232