

# *Welcome to The Wolf Pack*



## *Kunsan Newcomers Guide*

Created By:  
The Airman & Family Readiness Center  
8th Force Support Squadron

1 August 2017

## **Table of Contents**

8th Fighter Wing History .....	3
Korean Readiness Orientation (KRO) Policy Letters. ..	6
What Should I Bring to Kunsan? .....	11
Getting Here .....	13
Useful Travel Expressions .....	16
Getting Around Gunsan .....	17
Kunsan AB In-Processing Schedule .....	19
Housing Office Information.....	21
Where to Eat, Shop, and Relax on Base .....	27
What to Expect in the Commissary .....	30
Gunsan City & Other Local Places. ....	31
Quick Reference Numbers .....	32

**Note: Kunsan AB is a not command sponsored tour, but if you are thinking on bringing your dependents to the country for more than 30 days, please notify your Sponsor about your intentions, so he/she can provide you the Unit NEO(Non-combatant Evacuation Operations) Warden and receive the appropriate information.**



## 8th Fighter Wing History

Kunsan Air Base is home to the 8th Fighter Wing which is known as the “Wolf Pack”, a nickname given during the command of Colonel Robin Olds back in 1966. It’s one of two major Air Force installations operated by the United States in Korea. Kunsan Air Base is located on the west coast of the South Korean peninsula bordered by the Yellow Sea.

Gunsan City is the host city for Kunsan Air Base. “Kunsan” and “Gunsan” are spelled exactly the same in Korean: 군산. Gunsan City is pronounced Gunsan-si and is spelled 군산시. If you search “Kunsan” on the internet, you usually find information about the base, and if you search “Gunsan”, you usually get information about the host city.

### **The Beginning**

The history of the 8th Fighter Wing officially began in 18 August 1948 at Ashiya Airfield, Japan. The 8th FW did not serve in World War II, it does share ties with a World War II fighter group, the 8th Pursuit (and later Fighter) Group. However, the history of the group stretches all the way back to 1923. On April 1, 1931, 8 PG was activated at Langley Field, Virginia flying such aircraft as the PB-2, P-6 and P-12 until moving in November 1940 to Mitchel Field, New York, where it became responsible for the air defense of New York City. Ten days after the attack on Pearl Harbor, 8 PG received orders to relocate to Brisbane, Australia to fly the P-39 and P-400. The Air Force re-designated 8 PG as the 8th Fighter Group in May 1942.

During early operations, the group and its squadrons (35th, 36th, and 80th Fighter Squadrons) concentrated on defense of Australia and Allied territory in New Guinea. In April 1943, the group moved to Port Moresby, New Guinea flying the P-38 Lightning, the P-40, the P-47 and P-38. After moving to the Philippines in December 1944, the group spent the next several months conducting offensive operations, as well as flying escort missions in the area. Moving to Le Shima in August 1945, 8 FG flew several missions against the Japanese. On August 14, 1945, the day of the Japanese surrender, 8 FG shot down the last enemy plane of the war. During World War II, 8 FG participated in nine campaigns and shot down 446 enemy aircraft, creating 24 aces.

**Birth of the 8th Fighter Wing**

After the war, the group moved to Fukuoka, Japan in November 1945 as part of the occupation force. In early 1946, the group converted to the P-51 Mustang. On 18 August 1948, the Air Force officially activated the 8th Fighter Wing. 8 FG was assigned as a subordinate component of the wing. In the Mustang—re-designated from the "pursuit" P-51 to the "fighter" F-51—and later in the F-80 Shooting Star, the 8FW provided air defense of Japan. On January 20, 1950, the wing designation changed to the 8th Fighter-Bomber Wing.



**Korean War**

As the Korean War began, the 8 FBW provided air cover for the evacuation of Americans from Korea on June 26, 1950, the day after the invasion. Major Charles J. Loring, a pilot in the 80 FS, was posthumously awarded the Medal of Honor for flying his badly damaged F-80 aircraft into an enemy artillery emplacement near Sniper Ridge so U.S. infantry men could escape.

On July 1, 1958, the Air Force re-designated the wing as the 8th Tactical Fighter Wing. On June 18, 1964, 8 TFW moved to George AFB, California, and trained with the F-4D Phantom II until moving to Ubon Royal Thai AFB, Thailand.

**Vietnam War**

At Ubon, the 8 TFW carried out its wartime mission as it led the way for other tactical Air Force fighter units during the Vietnam War. By the end of 1966, aircrews assigned to 8 TFW flew nearly 14,000 combat missions into Vietnam.



During the war in Southeast Asia, political restrictions gave the North Vietnamese Air Force a distinct advantage over the US. One of the restrictions forbade US air forces from bombing North Vietnamese air bases in and around Hanoi and Haiphong. This restriction essentially gave the North Vietnamese a safe haven for their MiG fighters. To combat this advantage, Seventh Air Force planners in concert with Colonel Robin Olds, 8 TFW/CC, devised a plan known as Operation BOLO to draw the MiGs into a fight against F-4Cs armed for air-to-air combat—wolves in sheep’s clothing so to speak.

The Phantoms planned to simulate F-105s by flying at the same altitude, speed, and route and were modified to carry electronic countermeasure pods used only on F-105s until that time. In the final pre-flight brief for Operation BOLO on New Year's Day 1967, Colonel Olds told his pilots, "All right you wolf pack, let's go get them." On January 2, 1967, 11 four-ship flights from the 8th began converging on the North Vietnamese airfield of Phuc Yen. According to plan, the MiGs took the bait. In 12 minutes, 8 TFW recorded seven confirmed and two possible kills without a single loss. Operation BOLO established U.S. air superiority over the North by destroying nearly half of North Vietnam's most advanced fighters in only five days.

Following Operation BOLO, 8 TFW began referring to itself as the Wolf Pack. 8 TFW finished the war as the leading MiG-killer, logging 38.5 confirmed MiG kills prompting Bob Hope to refer to 8 TFW as the "world's largest distributor of MiG parts." In December 1972, 8 TFW was involved in Operation LINEBACKER II, launching 524 sorties for bombing missions against North Vietnam between 18-31 December 1972. All combat operations ended on 15 August 1973.

### **Back to Korea**

8 TFW was transferred to Kunsan Air Base, Republic of Korea on September 6, 1974 and became responsible for air defense of South Korea. Operational F-4D squadrons of the wing were tail coded "WP" (for "Wolf Pack"). In May 1981, the wing transitioned from the F-4 to the newer F-16A Fighting Falcon. This aircraft conversion made 8 TFW the first active-duty overseas F-16 wing. While the overall mission remained unchanged, 8 TFW was reorganized on February 3, 1992 as the 8th Fighter Wing. 8 FW entered a new era on November 17, 2000 when the 35th Fighter Squadron received its first Block 40 F-16s, allowing the Wolf Pack to take the fight into the night.

# **Korean Readiness Orientation (KRO) Policy Letters**



DEPARTMENT OF THE AIR FORCE  
8TH FIGHTER WING (PACAF)  
KUNSAN AIR BASE, REPUBLIC OF KOREA

1 Aug 16

MEMORANDUM FOR ALL 8TH FIGHTER WING PERSONNEL

FROM: 8 FW/CC

SUBJECT: Korea Readiness Orientation (KRO) Program

1. This policy letter provides additional guidance to the 7th Air Force KRO Policy Letter, dated 16 February 2015, and is effective immediately. It replaces the 8th Fighter Wing KRO Policy Letter, also dated 16 February 2015. All 8th Fighter Wing Airmen are expected to be familiar with the 7th Air Force KRO program and this policy letter.
2. Before completion of the 14-day KRO period, military members will sign an Alcohol Awareness Memorandum for Record with their supervisor. The memo for record provides supervisors and Airmen a tool to discuss the effects of alcohol abuse and misuse. It also gives each Airman the opportunity to acknowledge their understanding of the seriousness of alcohol-related incidents and to give their commitment to always have a plan and to look out for their fellow Airmen.
3. This policy will remain in effect until rescinded or superseded. It will be reviewed as needed to determine its continued suitability. My POC is 8 FW/JA at DSN 782-4283.

  
TODD A. DOZIER, Colonel, USAF  
Commander

2 Attachments:

1. 7 AF Command Policy Letter, Korea Readiness Orientation (KRO), dated 16 Feb 15
2. Alcohol Awareness Memorandum for Record



DEPARTMENT OF THE AIR FORCE  
HEADQUARTERS SEVENTH AIR FORCE (AIR FORCES KOREA)

FEB 16 2011

MEMORANDUM FOR ALL SEVENTH AIR FORCE AIRMEN

FROM: 7 AF/CC

SUBJECT: Command Policy Letter, Korea Readiness Orientation (KRO)

1. This Policy Letter outlines the Seventh Air Force (7 AF) KRO and is applicable to all United States Air Force military personnel assigned to or attached for duty to 7 AF, its subordinate units, and Air Force tenant units on the Korean peninsula. This policy does not apply to Airmen assigned to the US Embassy, the Air Force Element of Headquarters US Forces Korea, or US Special Operations Command Korea. The KRO is not intended for Airmen in the Republic of Korea to perform duty of less than 60 days or solely to participate in training events or exercises. This letter revises the content and length of the KRO. Previously, the KRO period was 30 days, but commanders, supervisors, and leaders at all levels have demonstrated that more than 95% of Airman can complete this orientation in 14 days or less—rapidly increasing “fight tonight” readiness among Airmen in Korea.

2. The mission of 7 AF is unique in the Air Force, as are the threats Airmen face in this forward deployed location. The moment we arrive in country we become part of a tremendous alliance, responsible for deterring aggression, defending the Republic of Korea (ROK), and defeating any enemy that would attack us. Our top priority is being ready to fight tonight, which requires all Airmen to be properly trained, including those newly arrived. At the end of their KRO, newly assigned Airmen should understand the need to maintain the highest standards of readiness, safety, health, welfare, good order and discipline.

3. KRO consists of activities to be completed by all Airmen within 14 days of their date of arrival in the ROK. Additional, unit-specific activities may be added to the orientation program, as determined by local command authorities. KRO activities are not intended to replace unit requirements, but are in addition to established in-processing requirements.

a. Mission Readiness and Understanding:

- (1) 7 AF Mission Brief.
- (2) USFK intelligence estimate and Operations Plan review.
- (3) Anti-Terrorism / Force Protection / Installation specific brief.
- (4) Demilitarized Zone tour and United Nations Command Military Armistice Commission brief (highly desired).
- (5) Unit-specific mission orientation.



b. Personal Resiliency:

(1) 7AF and locally-designed Sexual Assault Prevention and Response information, intended to orient Airmen to the local environment, prevention mechanisms, and the command's commitment to eliminating sexual assault in our ranks.

(2) 7 AF Alcohol Awareness and Accountability Training.

c. Program Completion: Airmen should complete KRO requirements within 14 calendar days of arrival, though commanders may extend that period if required. After all other KRO requirements are complete, supervisors will meet with their Airmen individually to review key points of the KRO and the readiness demands of duty in Korea. This meeting is a KRO requirement.


4. To ensure maximum readiness and focus on KRO, incoming military members subject to this policy shall not purchase or consume alcohol during the period 0-14 days from their date of arrival in the ROK. As the threat changes, so must our approach to readiness and factors that influence readiness negatively, including alcohol abuse. Every Airman must foster an environment in which readiness, standards, and military values are upheld as a matter of professional obligation--and they must be willing to take action when corrections are required. Furthermore, our behavior as Airmen must represent our Air Force values. This applies on duty and off, and is particularly true of leaders at all levels. Leaders should use every tool at their disposal--including personal example--to promote this environment. Leaders who fail to do so should be held accountable.

5. Subordinate commanders will develop and oversee their programs in compliance with this policy. However, immediate supervisors and individual sponsors of newly arrived Airmen will determine the success of the program. Their leadership in KRO is crucial.

6. Subordinate commanders and supervisors are charged with ensuring all military personnel are briefed on the contents of this letter. They will specify tracking methods for their organizations based on local requirements and capabilities.

7. This policy is effective immediately and will remain in effect until rescinded or superseded.

8. My POC is 7 AF/CAG, DSN 784-8280, 7af.cag@us.af.mil.

  
TERRENCE J. O'SHAUGHNESSY  
Lieutenant General, USAF  
Commander



**DEPARTMENT OF THE AIR FORCE  
8TH FIGHTER WING (PACAF)  
KUNSAN AIR BASE, REPUBLIC OF KOREA**

MEMORANDUM FOR RECORD

FROM:

SUBJECT: Alcohol Awareness Agreement

1. The (Place Squadron Here) does not condone drinking and driving, underage drinking, drinking to excess or other misuses of alcohol that may or may not result in an alcohol related incident at any time. The abuse of alcohol can have severe consequences. It may not only impact or ruin one's career, but more importantly it could result in death or severe bodily injury to not only oneself, but also one's Wingman or one of our host nation partners. All Airmen in the (Place Squadron Here) are responsible for their actions and understand they will be held accountable for them.

2. I have been informed that I must have a plan in place when choosing to drink alcohol socially. I have been briefed at Commanders Calls, the Wing Newcomers Orientation, and periodic safety briefs on the wingman concept and options available to get home safely, such as calling the A<sup>3</sup> (Airmen Assisting Airmen), First Sergeant, Commander, or someone from my flight recall roster.

3. I have been educated of the consequences of abusing alcohol or other intoxicants. I have been briefed on and am fully aware of the adverse effect on the mission, the possible initiation of action under the UCMJ, consideration for adverse administrative action such as discharge for misconduct with a less than honorable discharge, or similar actions placing unfavorable information in my service record as a possible result of abusing alcohol.

---

Members Signature

---

Members Supervisor Signature

---

Commander,

# What Should I Bring to Kunsan?

One of the most important things to help ease your transition to Kunsan is making sure you've planned for what you really need to have during your first few weeks. Your shipped whole baggage or household goods can take up to two months to arrive, and not having the things that are important to you can make that wait feel much longer. The list below is a highlight of the most common things hand carried or mailed ahead. No list could capture everything, but this one should make the wait for your TMO shipment as easy as possible.

## Recommend mailing these ahead of time or carrying in your luggage

- **Bedding** – Sheets, blankets, pillows. The BX also carries a limited selection.
- **Mattress pad** - You can order one on-line and have it waiting in the Post Office when you get here, or ship it in your household goods shipment.
- **Clothing**
  - Uniforms: Pack at least one set of Blues, ABU's and PT Gear in your luggage. Also consider packing appropriate seasonal gear (ex: cold weather gear for winter/rain gear for spring).
  - Civilian Clothes: Pack what you think you'll need for a few weeks. If you have a particular brand/style you prefer, stock up and in your TMO shipment in case it's not available locally.
  - Shoes: The BX selection is limited. If you have a brand preference, you may consider shipping an extra pair.
- **Your computer (desktop or laptop) and maybe a printer** -You can get internet access set-up in your room for a monthly fee. If you bring a laptop, WIFI is available at several places across the base. Also be sure to install and test Skype (or a similar program) to help keep in touch with family and friends back home. You can also use Skype or a service like Magic Jack or OTO as a phone system to call home.
- **A good digital camera** -There are so many great, and often surreal, things to take pictures of here. If your family and friends have never been to Asia, you'll be able to amaze them with the things you'll see. Contrary to popular belief, it's no cheaper to buy electronics in Korea than it would have been in the States.
- **If you're newly married** bring a copy of your marriage certificate. You may need it to ensure your new spouse has access to their entitlements.

## **Recommend shipping these in your household goods/hold baggage**

- **Cooking Items** – If you have a kitchen you'll want the basics to be able to cook. Many rooms already have cooking utensils, but if you have a special tool you prefer to use, plan to ship it with your household goods. Check with your sponsor and ask them to check out what's being left for you. The ovens are electric, and most are kitchenette size – smaller than stateside ovens, but still big enough for a basic cookie sheet or 9 x 13 inch pan. All quads/rooms are pre-furnished with microwaves.
- **Television, DVD player and Gaming System** – Electronics, to include gaming systems and televisions, are available for sale from AAFES. Cable TV is available, offering Armed Forces Network (AFN).
- **Stuff to hang on the walls** - This includes a wall clock, pictures, posters, etc. Keep them light because you can't put nails on the walls, and will have to use sticky hooks to hang them.
- **Mini-Fridge** - Some individuals in the quad style dorms recommend bringing a mini-fridge for your room so you don't have to share the refrigerator. These can be bought here if you don't already have one.
- **Sports equipment** - There are lots of intramural sports here, so bring your own gear if you have it, such as golf clubs, softball gear, soccer gear, bowling ball, bowling shoes, tennis racquet, racquetball racquet, etc. You can check out tennis, racquetball, wall climbing and weightlifting items free of charge at the Fitness Center. You can rent other gear from Outdoor Recreation such as skis, snowboards, etc.
- **Bike & Helmet** – TSgts & below aren't authorized to register POVs, but bikes are a good alternative. If you ride your bike in uniform or during the hours of darkness you must wear reflective material and have lights on the front and rear of your bike.

## **What NOT to Bring!**

- Don't bring **ALL** of your belongings. Don't bring furniture. There's no need because the dorms are all fully furnished. Don't bring your entire closet of clothes. The closets are small and you'll be wearing your uniform most of the time. You shouldn't need any small appliances or cleaning supplies (ex: microwaves/vacuums) as these are provided for you in the dorms.

# Getting Here

## Patriot Express

The majority of personnel coming to Korea arrive via the rotator at Osan AB, also known as the Patriot Express. Getting from Osan to Kunsan is very easy. Once you process through customs, look for the Kunsan AB Wolf Pack Wheels bus service signs in the Osan passenger terminal. The bus departs from Osan at 1700 (on Patriot Express arrival days), but will depart later if the incoming flight is delayed. Travel time is a little over two hours to Kunsan AB and costs \$45 (**completely reimbursable**). If your flight into Osan is significantly delayed, you may need to check in to Osan AB lodging for the night. Signs in the Osan terminal will provide more information. Take the next scheduled Wolf Pack Wheels to Kunsan (see schedule below).

## Commercial Travel

If your local Transportation Office books you on a commercial flight, you will fly into Incheon International Airport (ICN) near Seoul. Travel times from the US are around 14 hours. Once you get into ICN and process through immigration and customs, you have two options for getting to Kunsan: the military bus or the public bus (both are very comfortable tour-type busses).

**DO NOT TAKE A TAXI! It can cost over \$400 and is NOT REIMBURSABLE!**

**To take the Military Bus Service**, go to the USO Counter at Gate 1 (DSN 315-723-8621 or Commercial 011-82-2-7913-8621). Bus service from the Airport to Osan AB takes a little over an hour and **costs \$35 (completely reimbursable Keep Your Receipts)**. Depending on the day and time of arrival at Osan you may have to spend the night at Osan Lodging and take the Kunsan bus the next day. The last military bus departs Incheon for Osan at 2230. You can make reservations at Osan lodging by calling DSN 315-784-1844 (COMM 011-82-31-661-1844) or by e-mail at [turumi.lodge@osan.af.mil](mailto:turumi.lodge@osan.af.mil). The last leg of your trip will be from Osan to Kunsan on the Wolf Pack Wheels bus. Travel time is about two and one-half hours and **costs \$45 (completely reimbursable Keep Your Receipts)**. The Osan to Kunsan bus schedule is included below.

WOLF PACK WHEELS				
	Purchase 9-one way trips (Kunsan-Osan Shuttle) and receive the 10th trip FREE. Pick it up at the Falcon CAC Tour Desk or Osan ITT.			782-4679/5213
	\$45 Each Way (Official)			
	Mon & Wed	Tue & Thu	Friday	Weekends
<b>Kunsan AB to Osan AB</b>	1300	0800	0800 & 1800	0800 & 1300
<b>Osan AB to Kunsan AB</b>	1700 (time may vary due to Patriot Express)	1330	1330 & 2130	1330 & 1830
<b>Drop Off or Depart Place</b>	Osan Pax Terminal		Osan ITT & Lodging	
<b>Advance leisure ticket prices:</b>	E-1 to E-3: \$18 / E-4 to E-6: \$19 / E-7 and above: \$20 Club members receive \$1 off all Wolf Pack Wheels ticket prices.			
Wolf Pack Wheels will not be available during exercise except Monday & Wednesday for Patriot Express.				

# Getting Here

**To take the Public Bus from Incheon,** purchase a ticket from the ticket booth inside the airport near departure sliding door #8 or outside of the airport in front of Departure Gate 9C. The cost is 25,700 Won (about \$27), and you can pay in Won or with a credit card (if you only have USD cash on hand you can use the airport money exchange near Departure Door #7). Look for a small digital sign in the front the window of each bus. Your bus will have the scheduled departure time displayed. Show the driver your ticket to ensure you are getting on the correct bus. The trip will be about three and a half hours long, with a rest-stop halfway through. Items and food to purchase at the rest stop only takes Won or credit cards; in case your credit card does not work please bring extra Won. Once you arrive in Gunsan, you will need to take a taxi or have your sponsor pick you up from the Gunsan City Bus Terminal to get to Kunsan AB. There are taxis outside the bus terminal, but only the AAFES taxis can take you onto the base. They are easily identifiable with **Kunsan Base Taxi** on the side. If there are no AAFES taxis waiting outside, you can call for one at 063-470-4318 or 1544-9080 it will take approximately 15 minutes for one to arrive. You can opt to take a city taxi to the main gate and transfer to an AAFES taxi from the gate to base lodging. You will need won for the city taxi and the base taxi takes both USD and Won. A trip from the bus station to base will cost about 15,000 - 20,000 Won, depending on traffic (**completely reimbursable**).



ICN Terminal Map

**Ticket Purchase and Schedule at counter inside Departure Sliding Door #8**



ICN AIRPORT TO GUNAN	
S C H E D U L E	0820
	0950
	1100
	1250
	1440
	1540
	1640
	1710
	1810
	1900
2040	
2140	
To catch this bus from ICN to Gunsan City, <b>Outside Airport At Gate 9C</b>	
Fare	23,700 Won
Trip Length	3 hrs 30 mins

Exit thru door 10, cross the street, bus stop 9C will be to the left



# Useful Travel Expressions

## **At Incheon International Airport**

Can you show me where the USO counter is? (Note: The USO Counter is at Gate 1.)

유에스오 카운터가 어디인지 알려 주시겠습니까? (유에스오카운터는 1번게이트 입니다.)

Can you show me where the City Bus is? (Note: the City Bus departs Outside at Gate 9C.)

시외버스 타는 곳 좀알려 주시겠습니까? (버스는 바깥쪽 9번 게이트에서 출발합니다.)

Can you show me where I can do a currency exchange?

어디에서 환전(미국달러를 한국 돈 으로) 할수 있는지알려 주시겠습니까?

## **Airport Bus Terminal**

Can you show me where to purchase a ticket for Gunsan city?

(Note: the City Bus departs Outside at Gate 9C.)

전북 군산시 가는 버스표를 어디서사는지 알려주시겠습니까?

(버스는 건물밖 9번게이트 C 에서출발합니다.)

I'd like to purchase a ticket for Gunsan city.

전북 군산시 가는표 한장주세요.

Can you show me where to wait for the bus to Gunsan city?

전북 군산시가는버스를 어디에서 기다려야하나요?

Can you tell me when I arrive at Gunsan city bus terminal? (for the bus driver)

기사님, 제가 군산버스터미널에 도착하면 알려주시겠습니까?

## **Gunsan city Taxi**

Can you take me to Kunsan Air Base?

군산미공군부대(비행장)으로 가 주시겠습니까?



# Getting Around Gunsan

**In a Taxi:** AAFES has a contract with FTNH Co., Ltd to provide taxi service in the Korean Peninsula. They have a partnership with Seven (7) Taxi companies for a regular taxi dispatching service at Camp Casey, Camp Hovey, Camp Red Cloud, Camp Stanley, Camp Jackson, Yongsan, AB K-16, Camp Humphreys, Osan AB, and Kunsan AB. They also have their own Van taxis for a dispatching service for group passengers or customers with an abundance of luggage. Utilizing the taxi service is a great way to get around and discover Gunsan City.

## Useful Korean terms to show the Taxi Driver

### **Express Bus Terminal for Seoul**

서울가는 고속 버스 터미널로 가주세요.

### **Lotte Mart**

롯데 마트로 가주세요.

### **Bus Terminal (Intercity)**

시외 버스 터미널로 가주세요.

### **Train Station?**

기차역으로 가주세요.

### **E Mart?**

이마트로 가주세요.

### **Valentines Pizza?**

발렌타인 피자로 가주세요.

### **Eunpa Park?**

은파 유원지로 가주세요.

### **WolmyeongPark?**

월명공원으로 가주세요.

### **Ferry Terminal?**

도선장 여객 터미널로 가주세요.

### **Yondeong Street?**

영동거리로 가주세요.

### **Gunsan Airport?**

군산 공항으로 가주세요.

### **Gunsan Wolmyeong Stadium?**

군산 월명 체육관으로 가주세요.

### **Lotte Cinema Movie Theater?**

롯데시네마 극장으로 가주세요.

### **Kunsan Air Base?**

군산 미공군 부대(비행장)으로 가주세요.

### **Red Wolf Downtown Express:**

Is a contracted bus service provided by the 8 Force Support Squadron (FSS). You can buy tickets at the Falcon Community Activity Center (Bldg. 1027). Ticket prices: \$3 one way; \$5 round trip and \$20 five times round trips. Bus schedules: Fridays: 6:00pm (CAC > Wolf Pack Lodge > Lotte Mart); Weekends and Holidays: 2:00 and 6:00 pm (CAC > Wolf Pack Lodge > Lotte Mart)

Lotte Mart is a discount Shopping Mecca similar to Walmart which is centrally located in downtown Gunsan, close to a variety of restaurants, shops and entertainment from shows to movie theaters all in walking distance.



## **Airman and Family Readiness Center**

The Airmen and Family Readiness Center (A&FRC) is that One Stop Shop which can answer all your questions about things to do, places to go and ways to get around South Korea. The center offer soft skills and cultural classes such as cooking and Korean Language to assist in your communication efforts with the local populist.

The A&FRC provides free tours of downtown Gunsan. The tour consist of how to use the local bus transit system, understand how to read the bus schedule, and how to navigate in downtown Gunsan. A perfect way to spend a Saturday and see what the city has to offer.

If you are fortunate to be allowed to have a POV (Personal Own Vehicle) during your stay at Kunsan AB; the A&FRC has GPS navigation system for you to borrow to help navigate through Gunsan and those much needed trips throughout the ROK.

# Kunsan AB In-Processing Schedule

Shortly after arrival, all personnel newly assigned to Kunsan must attend three separate briefings.

1. MPS Mass In-Processing
  - Where: Base Theater, Building 1000.
  - When: Every Monday / Wednesday / Thursday.
  - Time: 0930 hours (approximately 1 hour).
  - Bring: All documents received during MPS final appointment.
  - Arriving personnel will attend the next scheduled mass in-processing briefing.
  - Bring In-Processing Checklist issue from Squadron CSS.
  - LRS will schedule personnel for chemical bag pick-up during this briefing.
  - Personnel will receive their appointment for travel voucher processing at this briefing.
  
2. Kunsan Readiness Orientation (Classified Briefing)/Newcomer's Orientation/Medical Right Start
  - Where: Base Theater, Building 1000.
  - When: Every 2nd & 4th Tuesday.
  - Time: 0730- 1430.
  - Must bring: CAC, Orders, Security Clearance Verification Memo (See Unit Security Manager) and KRO checklist.

Note: Arriving personnel needs attend the KRO/Newcomer's Orientation briefing.

## ATTENTION

**If you're currently receiving BAS and you are an E-1 to E-5 you need to adjust your budget to reflect the loss of funds into your EOM Statement.**

**All E-1 to E-5 will be on Meal Card Status while assigned to Kunsan AB  
All E-6 and above will be on BAS Status while assigned to Kunsan AB**

## **(EXCEPTIONS TO THIS POLICY)**

**Certain MOS Service Members E-1 to E-5 may be placed on BAS status due to their work assignments**

## ATTENTION

**If you are within 90 days from your PCS departure to Kunsan and have not received a sponsor, please call the Kunsan Airman & Family Readiness Center at **315-782-5644**.**

## PERSONAL OWNED VEHICLE

**E-7 and above or Command Sponsored Service Member (SM) has the option to purchase a vehicle while in Kunsan AB, or have your POV shipped**

Most Sr. SM's buy a vehicle from an outgoing SM for their tour here on base. The following requirements must be completed to be able to operate that vehicle on post and in the country of South Korea. [Before your vehicle arrives on the ROK, you must obtain a Military Drivers License \(Get with Your Sponsor for this INFO\).](#)

### Step 1 – Receiving Your Vehicle

Pick up your vehicle at Seoul VPC @ (Camp Kim) in Seoul go through Gate 17 follow the sign to the VPC to Bldg. C1244. If you need assistance call; Phone: DSN 782-8912 / 02-798-7036

### Step 2 – Registration and Temp Plates

Once you sign and pick up your vehicle from the APC; you need to register your vehicle at Pass and ID Office @ (Camp Kim) at Bldg. C1244 for TEMP plates (Wooded Plates). These plates are good for 10 working Days. To register the vehicle you must have:

- Your Civilian Driver's License
- CAC Card
- Orders Assigning you to Kunsan Air Base
- Current Auto Insurance
- Current Registration on Vehicle from States
- Cost is \$3.75 CASH (USD Only)

Any questions about the process call Pass and ID at Phone: DSN 782-8912 / 02-798-7036

### Gunsan City Registration for Local Vehicle Purchase or Command Sponsored Vehicles

#### Step 3 - Vehicle Inspection -

Once you arrive with your vehicle back at Kunsan AB you need to register your vehicle with true plates for Gunsan (Your Actual Plates for the Vehicle). To register the vehicle you must set up an appointment at car care center / gas station for Inspection (Cost \$17.00) on base. Then you need to go to the Gunsan DMV to register the vehicle.

Step 4 - Register Your Vehicle to Downtown Gunsan DMV (A&FRC has navigation systems to get you there or use your sponsor). **The cost will be a total of 37,000 Won.** Documentation you will need:

- Uni-Pass Korean Customs Import Document from Pass and ID @ Seoul
- Vehicle Inspection from Kunsan AB Car Care Center
- Application for New Vehicle Registration (Receive from Security Forces Office @ Kunsan AB)
- Temporary Operating Permit from Pass and ID @ Seoul
- Copy of Orders or Verification of Employment for Civilians
- Current Insurance Card
- CAC Card ( They will Copy ID )
- Military POV Driver's License from Security Forces Office

# The Dorms

CGOs/SNCOs live in dorms similar to small one-bedroom or studio apartments. These rooms have a small kitchen, living area, bedroom, and private bath.

Most E1s-E6s live in “quad” style dorms. These dorms have a shared living area with basic furniture and a kitchen connected to 4 bedrooms with private baths.

Clarify with your sponsor about what dorm style you will be in. The personal space you will have comparable to what you would have in a medium size bedroom or a college dorm room.

Most dormitories are equipped with a refrigerator, microwave, and stove/oven.

All dorms are set-up with laundry rooms. The size and availability will depend on what dorm you live in. There is also a base coin laundry available for bulk items.

The next few pages will give you an idea of what your dorm room may look like.

All Rooms have Basic AFN Cable Service (**You must provide the TV**) and Wi-Fi is available for purchase (see page 27 for more details)

## Housing Office Information

**Located:** Building 705, First Floor

**Phone:** 782-7079

**Office Hours:** Monday-Friday 0900-1700

**Stand-by Phone:** 010-4013-6070

**Additional Info:** For after hour lockouts and emergency work orders please dial the stand-by phone.

Please check with your sponsor to see if you will need to stay in lodging when you arrive or will be able to move directly into your permanent dorm room. Upon arrival or first duty day after arrival, members must in-process the Housing Office located on the first floor of Bldg. 705. Written authorization is required to occupy lodging and receive TLA when government quarters are not available. Inbounds members must provide a copy of their PCS orders to their Airman Dorm Leader (ADL) or the Housing Office to receive a dorm room assignment or TLA authorization. Please include a comment if you will be promoted to your next rank while you are at Kunsan as this may affect your room assignment. Please send your PCS orders to your Sponsor so he/she can start the process for you before arrival.

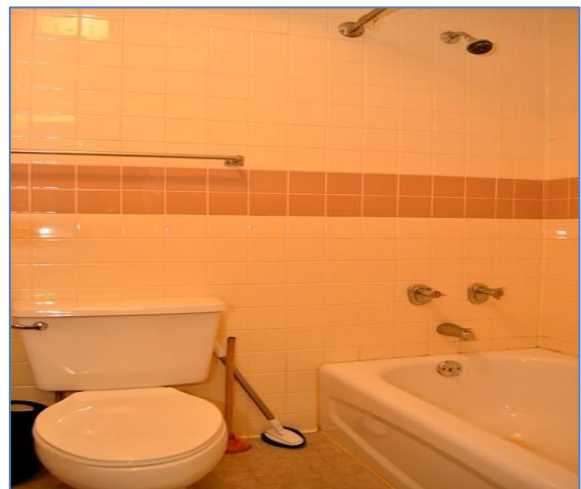
**FGO (Lt Col/Maj) Dorms—One Bedroom Apartment**



**FGO/CGO (Maj/Capt/Lt) Dorms—Efficiency Apartment**



**SNCO Dorms—Small One Bedroom Apartment**





**NCO & AMN Dorms—Suitemate Style, 1+1, w/Shared Kitchen**



**NCO & AMN Dorms - Quad Design w/Shared Kitchen**



# Where to Eat, Shop, and Relax on Base

You can easily go your whole tour without knowing all of the things that are available at Kunsan. Some are “obvious” but others are little gems you may not know exist.

- **The Library:** (Free Wi-Fi) This is one of the best kept secrets on base and it's **FREE!**
  - Great hours: 0930-2130, 7 days a week.
  - DVDs: Impressive collection of movies, TV series, and Korean movies. New releases are added each month.
  - Computer Center: 30 CAC-enabled computers hard-wired with internet connection. Print/scan at no charge. Fax for nominal fee (or free for official use). 2 Skype booths. DVD/VHS/CD viewing equipment available.
  - Good Reads: New Bestseller Fiction and Nonfiction books added monthly.
  - Relax: Comfortable reading room with magazines.
  - Quiet Area: Quiet study area includes two group study rooms.
  - Study Guides: Large collection of CLEP and DSST study guides updated last year.
  - Korea Collection: Learn more about Korean culture and history, or browse local travel guides.
  
- **The Son Light Inn:** (Free Wi-Fi) This is a hangout area sponsored by the Chapel.
  - Fun: The Inn offers several rooms to hang out in. They have a Movie Room that has AMAZING leather couches with a big screen TV for watching movies as well as a Wii, PS3, and Xbox One gaming systems. A “coffee lounge” with tables and comfortable couches. They have a ping pong/pool table room and 2 rooms for meeting/gathering/eating.
  - Music: The Son Light offers free piano and guitar lessons on Sunday night.
  - Coffee: The Inn offers a free coffee bar, usually open Sat & Sun evenings.
  - Food: On most Sunday nights, the Inn serves a free home cooked meal beginning at 1800 and is open for everyone.
  - Reservations: If you would like to reserve the Son Light Inn for group meetings, cooking events, gaming tournaments, etc. please contact the base chapel.
  
- **The CAC:** (Free Wi-Fi) it's open 24 hours a day and is a great escape from the dorms.
  - Food: Serves an array of food and drinks (including breakfast)
  - Free: Offers pool, darts, chess, foosball, ping pong, and gaming area equipped with an Xbox and Play Station.
  - Community Tours: the CAC offers several local tours to travel destinations around Korea. This is a great way to fill your weekend and see the culture.
  - ITT: The CAC is the home of ITT which offers excellent deals on traveling to other areas of Asia (China/Japan/Hawaii) or back to the states.

- **West Winds Golf Course:** (Free Wi-Fi) Open 365 days per year, West Winds Golf Course is open from dusk until dawn for your golf needs. The golf course features a nine-hole course, a full-service Pro Shop with a variety of golf clothing and gear, personalized club fitting, a driving net (soon to be a driving range), and a full-service lounge where you can grab a cool beverage and select menu items to include sandwiches, wings, and more.
- **The Palace Restaurant:** (Free Wi-Fi) is located in the West Winds Golf Course Club House. The Palace is open seven days a week, and offers a variety of fresh food choices ranging from salad and vegetarian options, to burgers, steak, lobster, and traditional Korean meals and sits across from the Wolfs Pack Lodge.
  - Restaurant Hours
  - Lunch: 1100-1500, Dinner: 1500-2100
  - Lounge Hours: Sun-Thur, 1100-2100, Fri & Sat, 1100-2200
  - Delivery service is available daily from 1030-2100 during exercises
- **The Base Exchange**
  - The Main shopping area: It's small but you can order any items they don't have in stock right in the store.
  - The food court has Anthony's Pizza, Popeye's, Taco Bell, Burger King, Baskin Robins, Subway and Starbucks.
  - Other Services: Beauty/Barber Shop, Clothing Sales, Custom Tailor Shop, Custom Shoe Store, Optical Shop, GNC, Florist, Alternations, Asian Gift Store, Art & Engraving shop and Base Theater.
- **The Club:** (Free Wi-Fi) The "Loring Club" is an all ranks club with a dining room and two separate lounges; Mickley's Pub and the Brig Gen Robin Olds Room. The dues are reasonable and as a club member you will receive discounts on club events and free food every Friday.
- **Outdoor Recreation:** (Free Wi-Fi) Outdoor Rec offers an array of trips and events and is a great place to rent sports and outdoor equipment of all kinds. They also have a frame and trophy shop and a paintball area right on base.
- **The Fitness Center:** (Free Wi-Fi) Excellent facility with an indoor track, rock climbing wall, racquetball court, free weights, weight machines, treadmills, elliptical, stationary bikes, and more.
- **Outdoor Pool:** The swimming pool is the perfect location to relax in your down time. The pool is open Memorial Day through Labor Day weekend.
- **The Chapel:** On base services include Catholic, Gospel, Contemporary, Latter Day Saints, Church of Christ, Jewish, and Earth Based Groups. The Chapel also provides information for Buddhist, Islamic, and Orthodox faiths.

- **The “LG Day Comm” Building:**

- LG U-Plus: This is where you activate your internet service; the cost will run around \$70.00 per month. You can also obtain various telephone services to include a room phone or a cell phone.
- Pack N Wrap: They will wrap things for you and package items for mailing all at a low cost.
- Bike Store: You can purchase a limited selection of bikes and accessories. They will also service your bike if it needs repairs.
- Other Stuff: Airman’s Attic, a Korean Water Store for bottled water, and coin laundry.

**NOTE:**

**If you’re a movie watcher or TV series enthusiast you may want to bring your ROKU, Apple TV or Amazon Freestick to expand your entertainment experience while you reside in your dorms.**

# What to Expect in the Commissary

Our commissary is relatively small; however, you can find most of what you're looking for, including most basic foods you get in the CONUS.

The commissary is closed every Monday and during most exercises.

If there is an upcoming exercise, most people start stocking up a week in advance.

The produce section is smaller than in a CONUS Commissary and will vary by season.

The commissary carries some Korean brand items popular with Americans. You can find some unique drinks and foods that you won't find anywhere else.



# Gunsan City & Other Local Places

## Grocery Shopping

- **Lotte Mart Road** – Us Locals call this the shopping district and restaurants around Lotte Mart - Contact you're A&FRC for the next Bus tour to Lotte Mart or to the downtown market.
- **E-Mart** – On the other side of Gunsan near the wharf district this another Walmart based store, standard grocery and retail items and a cheaper price than Lotte Mart.

## Outdoor Fun

- **Eunpa Park** – Great hiking, walking and cycling trails as well as outdoor sites and restaurants on Eunpa Lake. On Friday and Saturday you can find entertainment acts, music concerts and local plays at the Eunpa Lake pavilion and on the Bridge of Lights and Leisure.
- **Wolmyeong Park** – Great hiking, walking and cycling trails as well as some great views of the city, Gunsan is the city of lights when the sun goes down.
- **Sea Wall/Port** – A great bike ride and the opportunity to explore the indoor Korean fish market, if you're curious on trying some of the oceans more exotic delicacies this is the place to go.

## The Movies

- Gunsan City has an amazing large screen movie theaters and most of the movies are shown in English with Korean subtitles (CGV and Lotte Theaters) waking distance from Lotte Mart and at an reasonable price.

## Common US Franchise Restaurants Located in Gunsan City

Baskin Robins, McDonalds, Pizza Hut, Dunkin Donuts, Krispy Kreme & Starbucks

# Quick Reference Numbers

Kunsan AB Operator: DSN 315-782-1110/Comm: 063-470-1110; from CONUS: 011-82-63-470-1110

AAFES Taxi: 782-4318 or 063-470-4318

Airman & Family Readiness Center: 782-5644

Chapel: 782-4300

Command Post: 782-6000

CPTS: 782-6323

Emergency: Fromn DSN: 911 (On-Base) – local korean to base 911: 063-470-1911

Dental Clinic: 782-4847

Education Office: 782-5148

Flight Medicine: 782-4509

Housing Office: 782-7079

LE Desk: 782-4944

Legal: 782-4283

LRS/IPE: 782-6461

Medical Appointment Desk: 782-2273

Military Personnel Section Customer Support: 782-7308

Red Cross: 782-4601

SARC: 782-7272/Cell: 010-8520-1442

TRICARE Office: 782-5502

Wolf Pack Lodge: 782-1844 or 011-82-63-470-1844/4604

Osan AB Operator: DSN 315-784-1110; Comm: 031-661-1110; from CONUS: 011-82-31-661-1110

Osan Lodging (Turumi Lodge): 784-1844; E-mail: turumi.lodge@osan.af.mil

Incheon Airport USO: DSN 315-723-8621; Comm from CONUS: 011-82-2-7913-8621/5586